



Labware Transport System

Revolutionary. Rapid. Reliable.

For use in:

ELISAs

High Throughput Screening

High-Speed Fill & Seal

OEM Instrument Loading

 **Hudson Control Group**

Lablinx[®] is the next step in the evolution of laboratory automation. A *high-speed, modular, expandable* track system that delivers labware to multiple laboratory instruments, **Lablinx** gives users up to 10 times the throughput of ordinary microplate robots. It allows the user to setup a variety of configurations to meet any lab's specific automation needs, from simple, automated workcells to full-scale systems that automate entire assays.

Revolutionary

Lablinx was developed with the input of lab automation users. An entirely new way of thinking for moving labware between instruments, **Lablinx** services liquid handlers, readers, washers, dispensers, sealers, incubators, microarrays – virtually any microplate-using instrument found in labs today.

Rapid

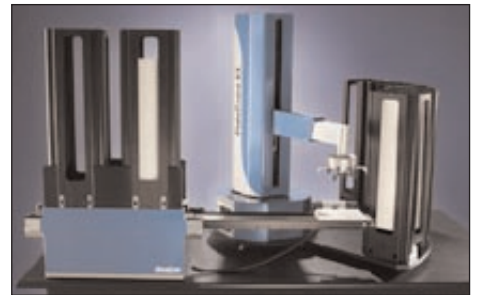
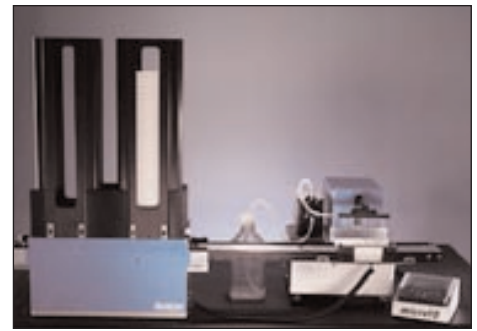
Lablinx is truly modular, allowing users to link components together in any combination, to create a high-speed workcell. All mechanical and electrical connections between **Lablinx** modules are self-contained. No complex external control modules are required to operate the system. Its low-profile, benchtop design also makes it easy to install **Lablinx** systems within laboratory hoods or enclosures.

Reliable

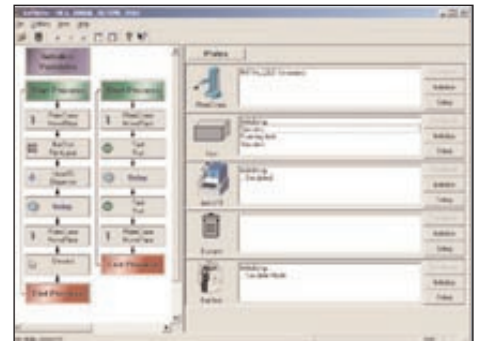
Lablinx was created specifically for applications in laboratory automation. Its mechanically robust and simple design provides reliable walkaway automation. Easy to configure and set up, **Lablinx** can deliver labware to multiple instruments simultaneously, greatly increasing throughput. It will out-perform any track-mounted, articulating arm lab automation system.

Features:

- Moves all types of labware: microplates, deepwell plates, tip racks, microtube racks
- Links together multiple lab instruments in a continuous production-line flow
- Much higher throughput than track-mounted and stationary articulated robotic arms
- Easily reconfigured for new equipment and assays
- Small envelope fits easily within standard laboratory hoods
- High-speed plate-feeding for fast washing, dispensing, reading, sealing, and labeling of microplates
- Automation of complete assays (cell-based, ELISAs, mass spec., etc.)
- Expandable tracks to meet your research production needs as they grow
- Available modules with any combination of Hudson stackers, pick-and-place arms, track systems and plate stop modules
- Includes Hudson Control Group's SoftLinx[™] software, which provides an easy-to-use interface to coordinate the **Lablinx** operation with other automated instruments



Easily interfaces with StackLink[™] and PlateCrane EX[®] as well as other manufacturers' equipment.



SoftLinx software makes it easy to interface the Lablinx with other automated instruments for seamless process control.



Contract Holder
GS-07F-9491S

Hudson Control Group
Customized Solutions in Microplate Automation and Robotics