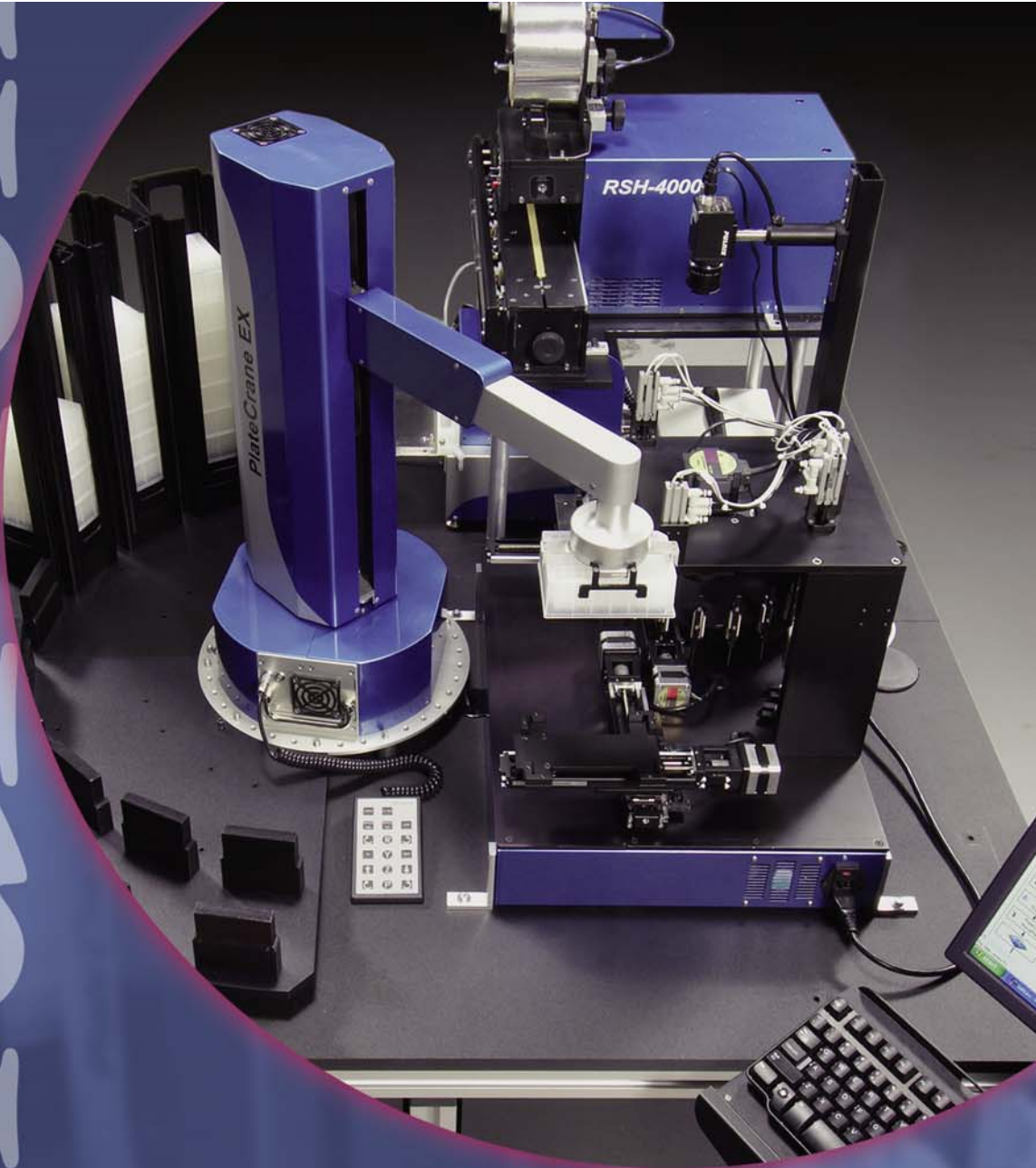


BRAND



High-Throughput Colony-Picking Workcell

Automated. Adaptive. Unique.

*For use in:
Colony Picking
Re-Arraying
Replication*

 **Hudson Control Group**

RapidPick™ - High-Throughput Colony-Picking Workcell

The **RapidPick™** is the first and only fully automated high-throughput colony-picking workcell, that delivers performance and precision unparalleled in the Life Science industry.

Automated

The **RapidPick** workcell, for the first time ever, will allow researchers to not only automate the selection and growth of cells grown on a colony plate, but will also retain a record and image of the specific colony and which culture plate/well it inoculated. It enables users to establish an unbroken data path from original colony to final result, such as tracking a clone to a specific expressed protein. This trail is indispensable to genetic researchers.

Adaptive

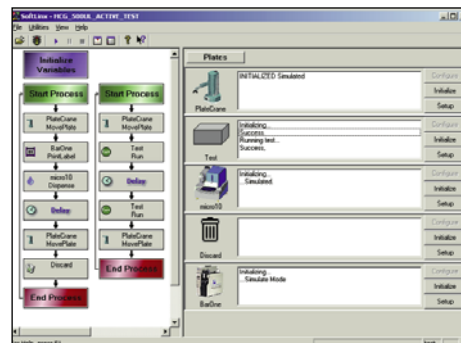
The **RapidPick** colony-picking workcell has an integrated dispenser to apply fresh media to growth plates *immediately before inoculation*, and has an integrated sealer to seal the plate *immediately after inoculation*. As a result, there is no danger of contamination from leaving open, filled growth plates in the system. If used with Hudson's LabLinx high-speed and expandable track system, the **RapidPick** can be seamlessly integrated with downstream automated instruments.

Unique

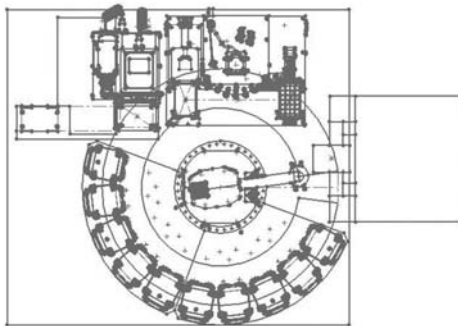
This workcell is unique in its completely integrated operation with products like an optional robotic incubator, which provides complete automation of the entire culture outgrowth process. It also allows researchers the ability to feed source and destination plates in a compact workcell environment. The **RapidPick** takes advantage of Hudson's PlateCrane EX™ robot loading system and the RSH 4000™ Adhesive Seal Microplate Sealer for unparalleled high-throughput and ease of use. No other system that includes colony picking has this level of integration.

Features:

- Input Capacity of 90 deep-well culture growth plates
- Barcode tracking of both colony dish and culture plate/well
- Throughput rate up to 6000 colonies per hour
- Integrated media dispenser for fresh growth media in every plate
- Integrated gas-permeable seal applicator to insure freedom from contamination
- Includes Hudson Control Group's SoftLinx for Systems software, which provides an easy-to-use graphical interface to the **RapidPick**. The software will enable the user to take full advantage of this system's ability to run as a single system or as multiple individual workcells, which is unique in the lab automation industry.



SoftLinx™ software makes it easy to interface the RapidPick with other automated instruments for seamless process control.



Contract Holder
GS-07F-9491S

Hudson Control Group
Customized Solutions in Microplate Automation and Robotics